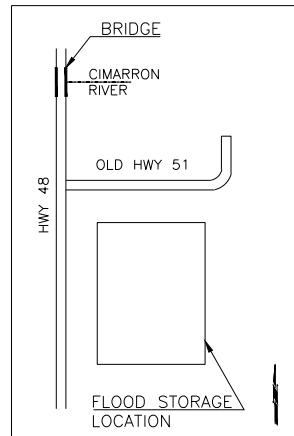
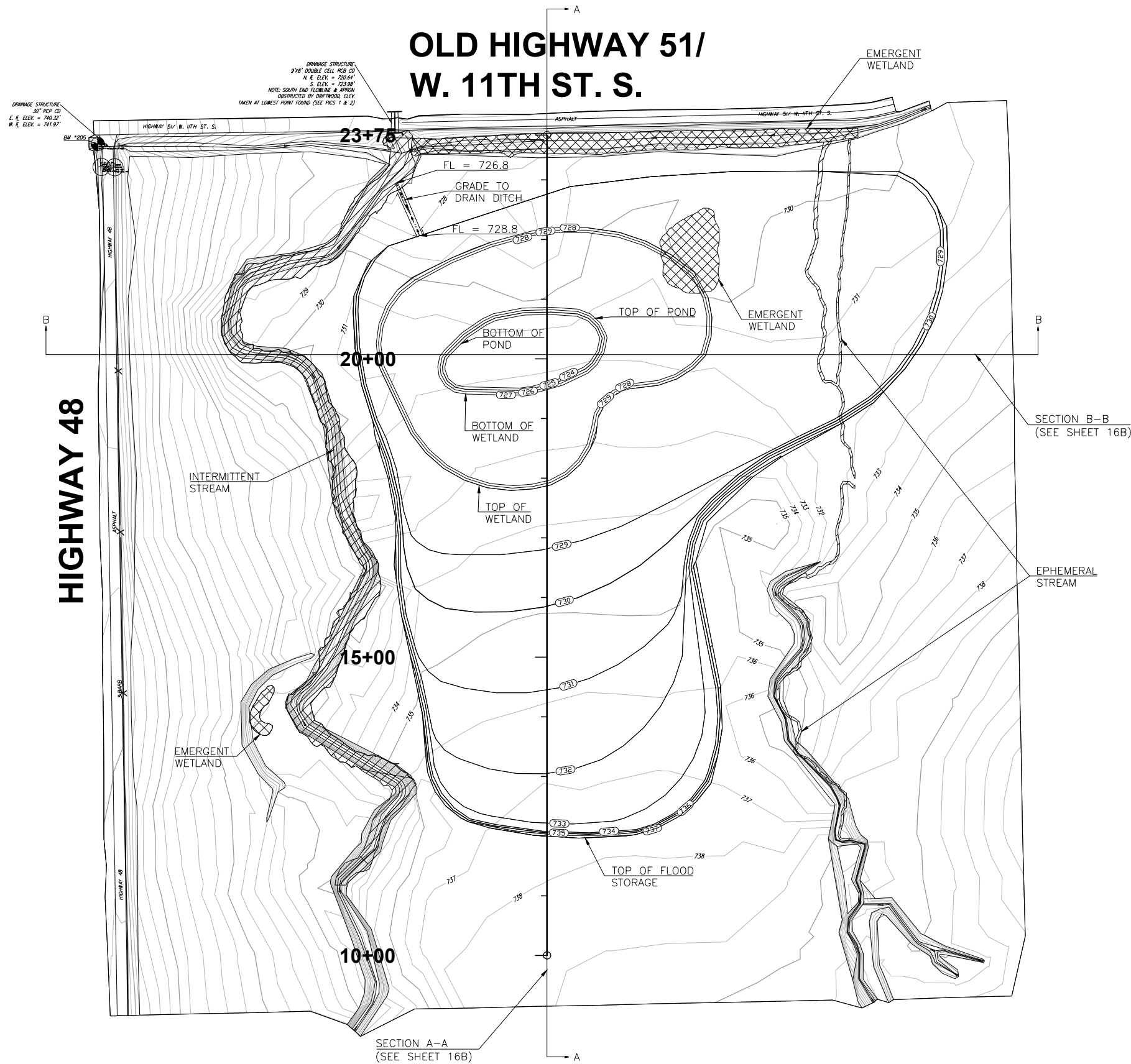


DESCRIPTION	REVISIONS	DATE



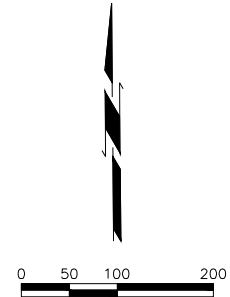
LOCATION MAP
(N.T.S.)

OLD HIGHWAY 51/ W. 11TH ST. S.



EXCAVATION VOLUME	
FLOOD STORAGE	= 58,328.59 CY
WETLAND	= 12,654.38 CY
POND	= 8,630.92 CY
TOTAL	= 79,613.89 CY

NOTE: ALL WASTE MATERIAL SHALL BE PLACED ABOVE ELEVATION = 754 FT



FILENAME: 24 CROSS SECTION.DWG			
DESIGN	C.W.T.	SH 48 OVER CIMARRON RIVER	CREEK COUNTY
DRAWN	C.W.T.		
CHECKED	S.N.H.		
CEC		JOB PIECE NO. 27925(04)	SHEET NO. 23

FLOOD STORAGE GRADING PLAN